

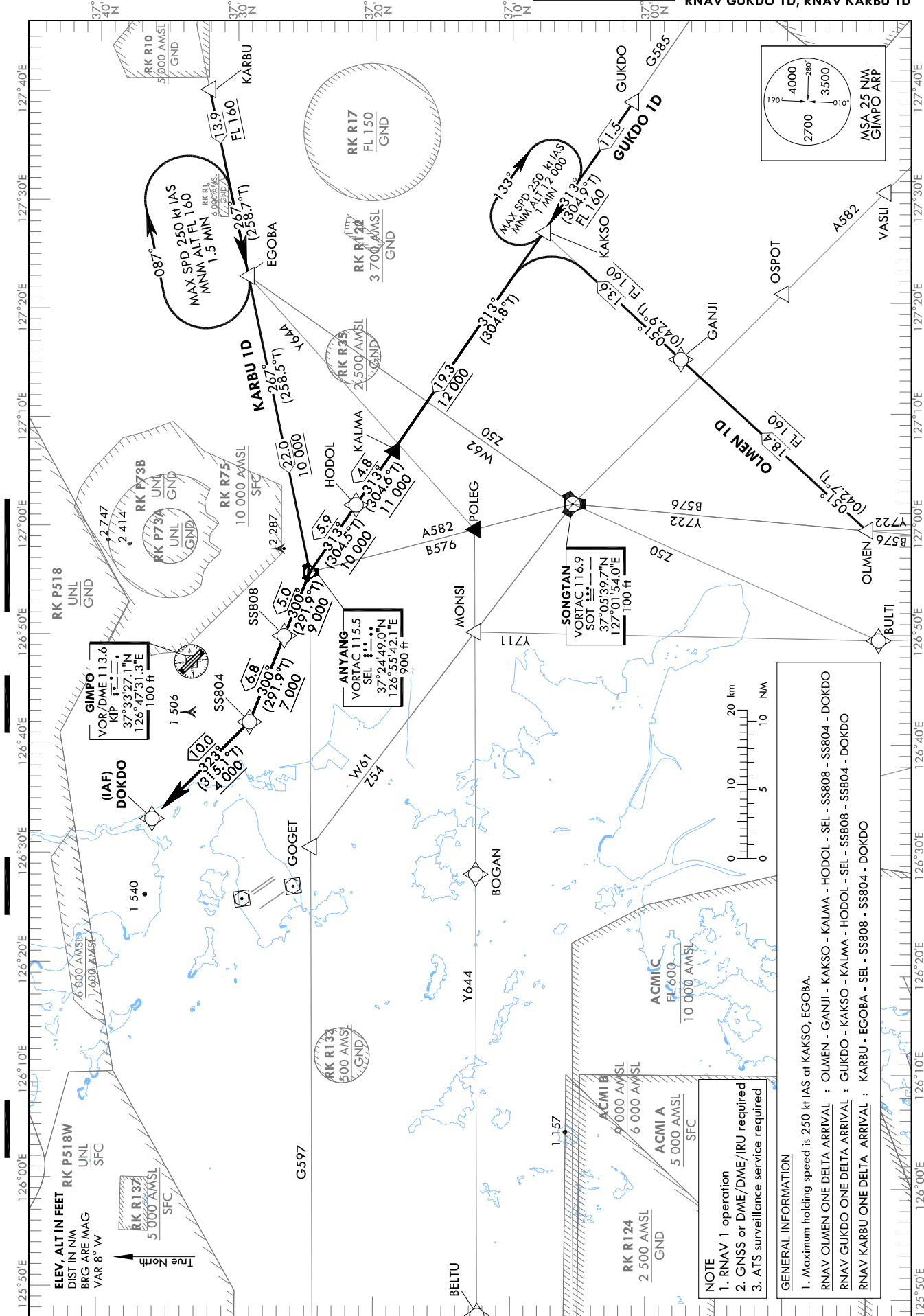
STANDARD ARRIVAL CHART
INSTRUMENT (STAR) - ICAO

Note : Arrival under ICAO Flight Procedures.

TRANSITION ALT 14 000
TRANSITION LVL FL 140

SEOUL APP 119.75
119.1
GIMPO TWR 118.1
118.05

SEOUL/Gimpo Intl(RKSS)
RWY 14L/R
RNAV OLMEN 1D
RNAV GUKDO 1D, RNAV KARBU 1D



Change : Information of OBST height and symbol.

SEOUL/Gimpo Intl(RKSS)
RWY 14L/R
RNAV OLMEN 1D, RNAV GUKDO 1D

AERONAUTICAL DATA TABULATION

Standard Instrument Arrival Procedure Coding Tables

RNAV OLMEN 1D												
Serial Number	Path Descriptor	Waypoint Identifier	Fly-over	Course/Track °M(°T)	Distance (NM)	Turn direction	Altitude (ft)	Speed (kt)	Coordinates	VPA/ RDH	Navigation specification	Remarks
001	IF	OLMEN	-	-	-	-	-	-	364413.4 N 1265927.6 E (RDL 184 SEL/D41, RDL 193 SOT/D22)	-	RNAV 1	-
002	TF	GANJI	-	051 (042.7)	18.4	-	+FL 160	-	365745.7 N 1271501.2 E (RDL 158 SEL/D31, RDL 135 SOT/D13)	-	RNAV 1	-
003	TF	KAKSO	-	051 (042.9)	13.6	-	+FL 160	-	370744.6 N 1272637.4 E (RDL 132 SEL/D30, RDL 092 SOT/D20)	-	RNAV 1	-
004	TF	KALMA	-	313 (304.8)	19.3	-	+12 000	-	371844.9 N 1270644.8 E (RDL 132 SEL/D11, RDL 024 SOT/D14)	-	RNAV 1	-
005	TF	HODOL	-	313 (304.6)	4.8	-	+11 000	-	372127.2 N 1270149.9 E (RDL 132 SEL/D6, RDL 008 SOT/D16)	-	RNAV 1	-
006	TF	SEL	-	313 (304.5)	5.9	-	+10 000	-	372449.0 N 1265542.1 E (RDL 354 SOT/D20, RDL 151 KIP/D11)	-	RNAV 1	-
007	TF	SS808	-	300 (291.9)	5.0	-	+9 000	-	372641.1 N 1264952.6 E (RDL 300 SEL/D5, RDL 172 KIP/D7)	-	RNAV 1	-
008	TF	SS804	-	300 (291.9)	6.8	-	+7 000	-	372912.0 N 1264200.0 E (RDL 300 SEL/D12, RDL 234 KIP/D6)	-	RNAV 1	-
009	TF	DOKDO	-	323 (315.1)	10.0	-	+4 000	-	373617.1 N 1263307.1 E (RDL 311 SEL/D21, RDL 292 KIP/D12)	-	RNAV 1	IAF

RNAV GUKDO 1D												
Serial Number	Path Descriptor	Waypoint Identifier	Fly-over	Course/Track °M(°T)	Distance (NM)	Turn direction	Altitude (ft)	Speed (kt)	Coordinates	VPA/ RDH	Navigation specification	Remarks
001	IF	GUKDO	-	-	-	-	-	-	370110.9N 1273822.6E (RDL 132 SEL/D42, RDL 107 SOT/D30)	-	RNAV 1	-
002	TF	KAKSO	-	313 (304.9)	11.5	-	+FL 160	-	370744.6N 1272637.4E (RDL 132 SEL/D30, RDL 092 SOT/D20)	-	RNAV 1	-
003	TF	KALMA	-	313 (304.8)	19.3	-	+12 000	-	371844.9N 1270644.8E (RDL 132 SEL/D11, RDL 024 SOT/D14)	-	RNAV 1	-
004	TF	HODOL	-	313 (304.6)	4.8	-	+11 000	-	372127.2N 1270149.9E (RDL 132 SEL/D6, RDL 008 SOT/D16)	-	RNAV 1	-
005	TF	SEL	-	313 (304.5)	5.9	-	+10 000	-	372449.0N 1265542.1E (RDL 354 SOT/D20, RDL 151 KIP/D11)	-	RNAV 1	-
006	TF	SS808	-	300 (291.9)	5.0	-	+9 000	-	372641.1N 1264952.6E (RDL 300 SEL/D5, RDL 172 KIP/D7)	-	RNAV 1	-
007	TF	SS804	-	300 (291.9)	6.8	-	+7 000	-	372912.0N 1264200.0E (RDL 300 SEL/D12, RDL 234 KIP/D6)	-	RNAV 1	-
008	TF	DOKDO	-	323 (315.1)	10.0	-	+4 000	-	373617.1N 1263307.1E (RDL 311 SEL/D21, RDL 292 KIP/D12)	-	RNAV 1	IAF

SEOUL/Gimpo Intl(RKSS)
RWY 14L/R
RNAV KARBU 1D

AERONAUTICAL DATA TABULATION

Standard Instrument Arrival Procedure Coding Tables

Serial Number	Path Descriptor	Waypoint Identifier	Fly-over	Course/Track °M(°T)	Distance (NM)	Turn direction	Altitude (ft)	Speed (kt)	Coordinates	VPA/TCH	Navigation specification	Remarks
001	IF	KARBU	-	-	-	-	-	-	373159.0N 1273952.0E (R 086 SEL/D36, R 057 SOT/D40)	-	RNAV 1	-
002	TF	EGOBA	-	267 (258.7)	13.9	-	+FL 160	-	372914.7N 1272245.9E (R 086 SEL/D22, R 043 SOT/D29)	-	RNAV 1	-
003	TF	SEL	-	267 (258.5)	22.0	-	+10 000	-	372449.0N 1265542.1E (R 354 SOT/D20, R 151 KIP/D11)	-	RNAV 1	-
004	TF	SS808	-	300 (291.9)	5.0	-	+9 000	-	372641.1N 1264952.6E (R 300 SEL/D5, R 172 KIP/D7)	-	RNAV 1	-
005	TF	SS804	-	300 (291.9)	6.8	-	+7 000	-	372912.0N 1264200.0E (R 300 SEL/D12, R 234 KIP/D6)	-	RNAV 1	-
006	TF	DOKDO	-	323 (315.1)	10.0	-	+4 000	-	373617.1N 1263307.1E (R 311 SEL/D21, R 292 KIP/D12)	-	RNAV 1	IAF

HOLDING PROCEDURE

Holding Identification	Path Descriptor	Waypoint Identifier	Fly-over	Course/Track °M(°T)	Time (min)	Turn direction	Altitude (ft)	Speed (kt)	Coordinates	VPA/TCH	Navigation specification	Remarks
RNAV GUKDO 1D	-	KAKSO	Y	313 (304.9)	1	R	+12 000	-250	370744.6N 1272637.4E (R 132 SEL/D30, R 092 SOT/D20)	-	RNAV 1	-
RNAV KARBU 1D	-	EGOBA	Y	267 (258.7)	1.5	R	+FL 160	-250	372914.7N 1272245.9E (R 086 SEL/D22, R 043 SOT/D29)	-	RNAV 1	-

Change : Fix name(ENKAS → EGOBA, BULLS → GUKDO).

INTENTIONALLY

LEFT

BLANK

SEOUL/Gimpo Intl(RKSS)

RWY 14L/R

RNAV REBIT 1D, REBIT 1F TRANSITION, RNAV COWAY 1F

AERONAUTICAL DATA TABULATION

Standard Instrument Arrival Procedure Coding Tables

RNAV REBIT 1D												
Serial Number	Path Descriptor	Waypoint Identifier	Fly-over	Course/Track °M(°T)	Distance (NM)	Turn direction	Altitude (ft)	Speed (kt)	Coordinates	VPA/RDH	Navigation specification	Remarks
001	IF	REBIT	-	-	-	-	-	-	371203.0 N 1252912.7 E (RDL 268 SEL/D70, RDL 283 SOT/D74)	-	RNAV 1	-
002	TF	ALTON	-	067 (058.4)	11.8	-	+FL 160	-	371812.6 N 1254146.1 E (RDL 272 SEL/D59, RDL 289 SOT/D65)	-	RNAV 1	-
003	TF	SI931	-	067 (058.5)	14.4	-	+12 000	-	372542.2 N 1255709.0 E (RDL 279 SEL/D47, RDL 299 SOT/D55)	-	RNAV 1	-
004	TF	DANAN	-	067 (058.7)	13.0	-	+9 000	-	373226.0 N 1261104.0 E (RDL 290 SEL/D36, RDL 312 SOT/D49)	-	RNAV 1	-
005	TF	SS801	-	082 (073.8)	8.0	-	+7 000	-	373439.1 N 1262042.3 E (RDL 298 SEL/D30, RDL 281 KIP/D21)	-	RNAV 1	-
006	TF	DOKDO	-	089 (080.6)	10.0	-	+4 000	-	373617.1 N 1263307.1 E (RDL 311 SEL/D21, RDL 292 KIP/D12)	-	RNAV 1	IAF

RNAV REBIT 1F TRANSITION												
Serial Number	Path Descriptor	Waypoint Identifier	Fly-over	Course/Track °M(°T)	Distance (NM)	Turn direction	Altitude (ft)	Speed (kt)	Coordinates	VPA/RDH	Navigation specification	Remarks
001	IF	REBIT	-	-	-	-	-	-	371203.0 N 1252912.7 E (RDL 268 SEL/D70, RDL 283 SOT/D74)	-	RNAV 1	-
002	TF	COWAY	-	112 (103.9)	15.5	-	+FL 180	-	370817.9 N 1254804.6 E (RDL 261 SEL/D56, RDL 281 SOT/D59)	-	RNAV 1	-

RNAV COWAY 1F												
Serial Number	Path Descriptor	Waypoint Identifier	Fly-over	Course/Track °M(°T)	Distance (NM)	Turn direction	Altitude (ft)	Speed (kt)	Coordinates	VPA/RDH	Navigation specification	Remarks
001	IF	COWAY	-	-	-	-	+FL 180	-	370817.9 N 1254804.6 E (RDL 261 SEL/D56, RDL 281 SOT/D59)	-	RNAV 1	-
002	TF	PINGO	-	097 (089.1)	12.3	-	+FL 160	-	370828.1 N 1260325.2 E (RDL 257 SEL/D45, RDL 282 SOT/D47)	-	RNAV 1	-
003	TF	SI901	-	088 (080.0)	13.4	-	+12 000	-	371046.2 N 1261955.9 E (RDL 252 SEL/D32, RDL 287 SOT/D34)	-	RNAV 1	-
004	TF	SS802	-	053 (044.4)	7.7	-	+9 000	-	371618.1 N 1262642.2 E (RDL 258 SEL/D25, RDL 232 KIP/D24)	-	RNAV 1	-
005	TF	SS803	-	052 (043.8)	6.7	-	+8 000	-	372114.9 N 1263226.8 E (RDL 267 SEL/D19, RDL 233 KIP/D17)	-	RNAV 1	-
006	TF	SS804	-	052 (043.7)	11.0	-	+7 000	-	372912.0 N 1264200.0 E (RDL 300 SEL/D12, RDL 234 KIP/D6)	-	RNAV 1	-
007	TF	DOKDO	-	323 (315.1)	10.0	-	+4 000	-	373617.1 N 1263307.1 E (RDL 311 SEL/D21, RDL 292 KIP/D12)	-	RNAV 1	IAF

HOLDING PROCEDURE												
Holding Identification	Path Descriptor	Waypoint Identifier	Fly-over	Course/Track °M(°T)	Time (min)	Turn direction	Altitude (ft)	Speed (kt)	Coordinates	VPA/RDH	Navigation specification	Remarks
RNAV REBIT 1F TRANSITION	-	REBIT	Y	097 (089.1)	1.5	R	+13 000	-250	371203.0 N 1252912.7 E (RDL 268 SEL/D70, RDL 283 SOT/D74)	-	RNAV 1	-

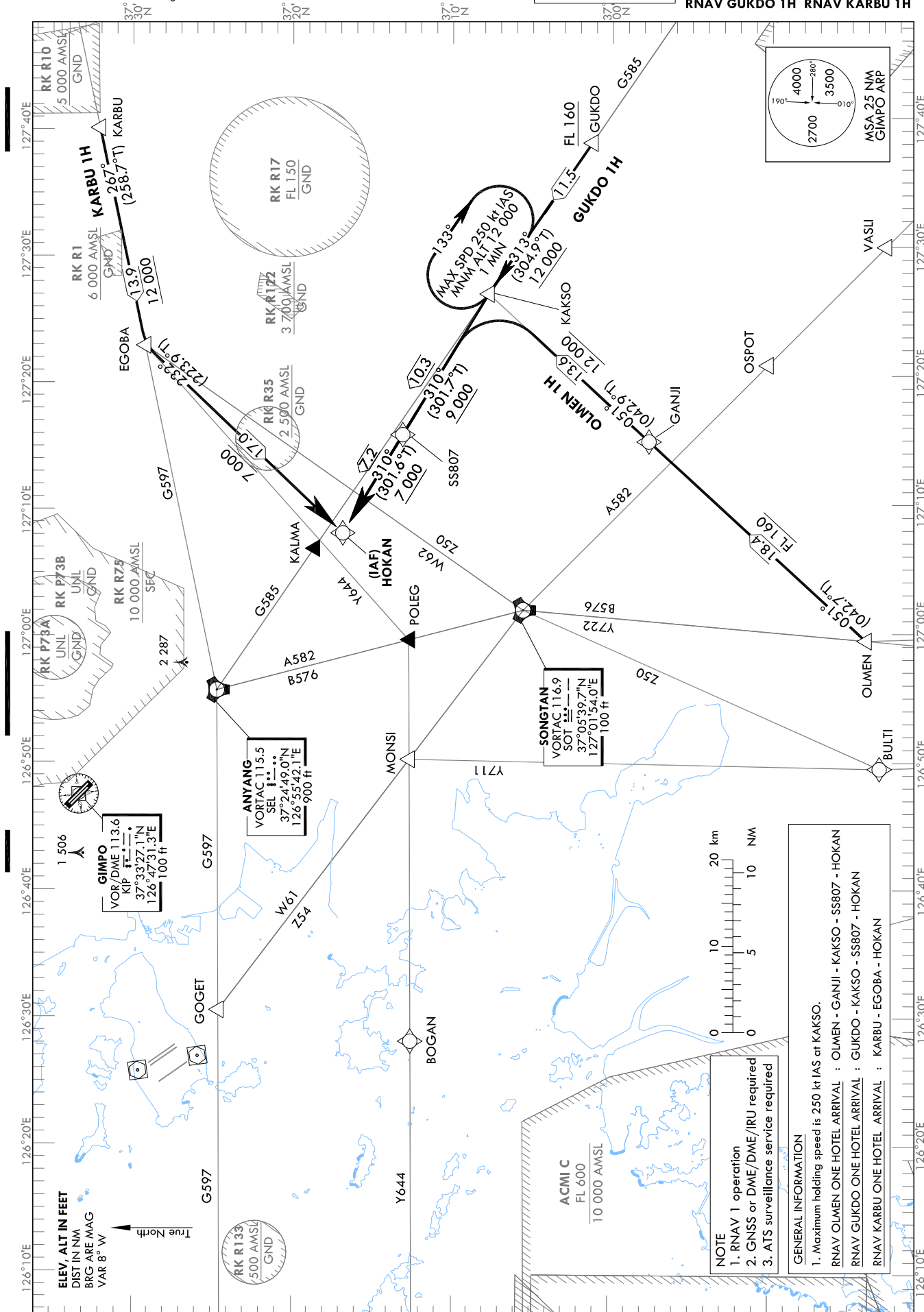
STANDARD ARRIVAL CHART
INSTRUMENT (STAR) - ICAO

Note : Arrival under ICAO Flight Procedures.

TRANSITION ALT 14 000
TRANSITION LVL FL 140

SEOUL APP 119.75
119.1
GIMPO TWR 118.1
118.05

SEOUL/Gimpo Intl(RKSS)
RWY 32L/R
RNAV OLMEN 1H
RNAV GUKDO 1H RNAV KARBU 1H



Change : Information of OBST height and symbol and GUKDO altitude.

NOTE
1. RNAV 1 operation
2. GNSS or DME/DME/IRU required
3. ATS surveillance service required

GENERAL INFORMATION
1. Maximum holding speed is 250 kt IAS at KAKSO.
RNAV OLMEN ONE HOTEL ARRIVAL : OLMEN - GANJJI - KAKSO - SS807 - HOKAN
RNAV GUKDO ONE HOTEL ARRIVAL : GUKDO - KAKSO - SS807 - HOKAN
RNAV KARBU ONE HOTEL ARRIVAL : KARBU - EGOBA - HOKAN

SEOUL/Gimpo Intl(RKSS)

RWY 32L/R

RNAV OLMEN 1H

RNAV GUKDO 1H RNAV KARBU 1H

AERONAUTICAL DATA TABULATION

Standard Instrument Arrival Procedure Coding Tables

RNAV OLMEN 1H												
Serial Number	Path Descriptor	Waypoint Identifier	Fly-over	Course/Track °M(°T)	Distance (NM)	Turn direction	Altitude (ft)	Speed (kt)	Coordinates	VPA/RDH	Navigation specification	Remarks
001	IF	OLMEN	-	-	-	-	-	-	36441.3.4 N 1265927.6 E (RDL 184 SEL/D41, RDL 193 SOT/D22)	-	RNAV 1	-
002	TF	GANJI	-	051 (042.7)	18.4	-	+FL 160	-	365745.7 N 1271501.2 E (RDL 158 SEL/D31, RDL 135 SOT/D13)	-	RNAV 1	-
003	TF	KAKSO	-	051 (042.9)	13.6	-	+12 000	-	370744.6 N 1272637.4 E (RDL 132 SEL/D30, RDL 092 SOT/D20)	-	RNAV 1	-
004	TF	SS807	-	310 (301.7)	10.3	-	+9 000	-	371309.8 N 1271538.9 E (RDL 134 SEL/D20, RDL 140 KIP/D30)	-	RNAV 1	-
005	TF	HOKAN	-	310 (301.6)	7.2	-	+7 000	-	371655.9 N 1270758.4 E (RDL 137 SEL/D13, RDL 143 KIP/D23)	-	RNAV 1	IAF

RNAV GUKDO 1H												
Serial Number	Path Descriptor	Waypoint Identifier	Fly-over	Course/Track °M(°T)	Distance (NM)	Turn direction	Altitude (ft)	Speed (kt)	Coordinates	VPA/RDH	Navigation specification	Remarks
001	IF	GUKDO	-	-	-	-	+FL 160	-	370110.9N 1273822.6E (RDL 132 SEL/D42, RDL 107 SOT/D30)	-	RNAV 1	-
002	TF	KAKSO	-	313 (304.9)	11.5	-	+12 000	-	370744.6N 1272637.4E (RDL 132 SEL/D30, RDL 092 SOT/D20)	-	RNAV 1	-
003	TF	SS807	-	310 (301.7)	10.3	-	+9 000	-	371309.8 N 1271538.9 E (RDL 134 SEL/D20, RDL 140 KIP/D30)	-	RNAV 1	-
004	TF	HOKAN	-	310 (301.6)	7.2	-	+7 000	-	371655.9 N 1270758.4 E (RDL 137 SEL/D13, RDL 143 KIP/D23)	-	RNAV 1	IAF

RNAV KARBU 1H												
Serial Number	Path Descriptor	Waypoint Identifier	Fly-over	Course/Track °M(°T)	Distance (NM)	Turn direction	Altitude (ft)	Speed (kt)	Coordinates	VPA/RDH	Navigation specification	Remarks
001	IF	KARBU	-	-	-	-	-	-	373159.0 N 1273952.0 E (RDL 086 SEL/D36, RDL 057 SOT/D40)	-	RNAV 1	-
002	TF	EGOBA	-	267 (258.7)	13.9	-	+12 000	-	372914.7 N 1272245.9 E (RDL 086 SEL/D22, RDL 043 SOT/D29)	-	RNAV 1	-
003	TF	HOKAN	-	232 (223.9)	17.0	-	+7 000	-	371655.9 N 1270758.4 E (RDL 137 SEL/D13, RDL 143 KIP/D23)	-	RNAV 1	IAF

HOLDING PROCEDURE

Holding Identification	Path Descriptor	Waypoint Identifier	Fly-over	Course/Track °M(°T)	Time (min)	Turn direction	Altitude (ft)	Speed (kt)	Coordinates	VPA/RDH	Navigation specification	Remarks
RNAV GUKDO 1H	-	KAKSO	Y	313 (304.9)	1	R	+12 000	-250	370744.6N 1272637.4E (RDL 132 SEL/D30, RDL 092 SOT/D20)	-	RNAV 1	-

Change : GUKDO altitude information.

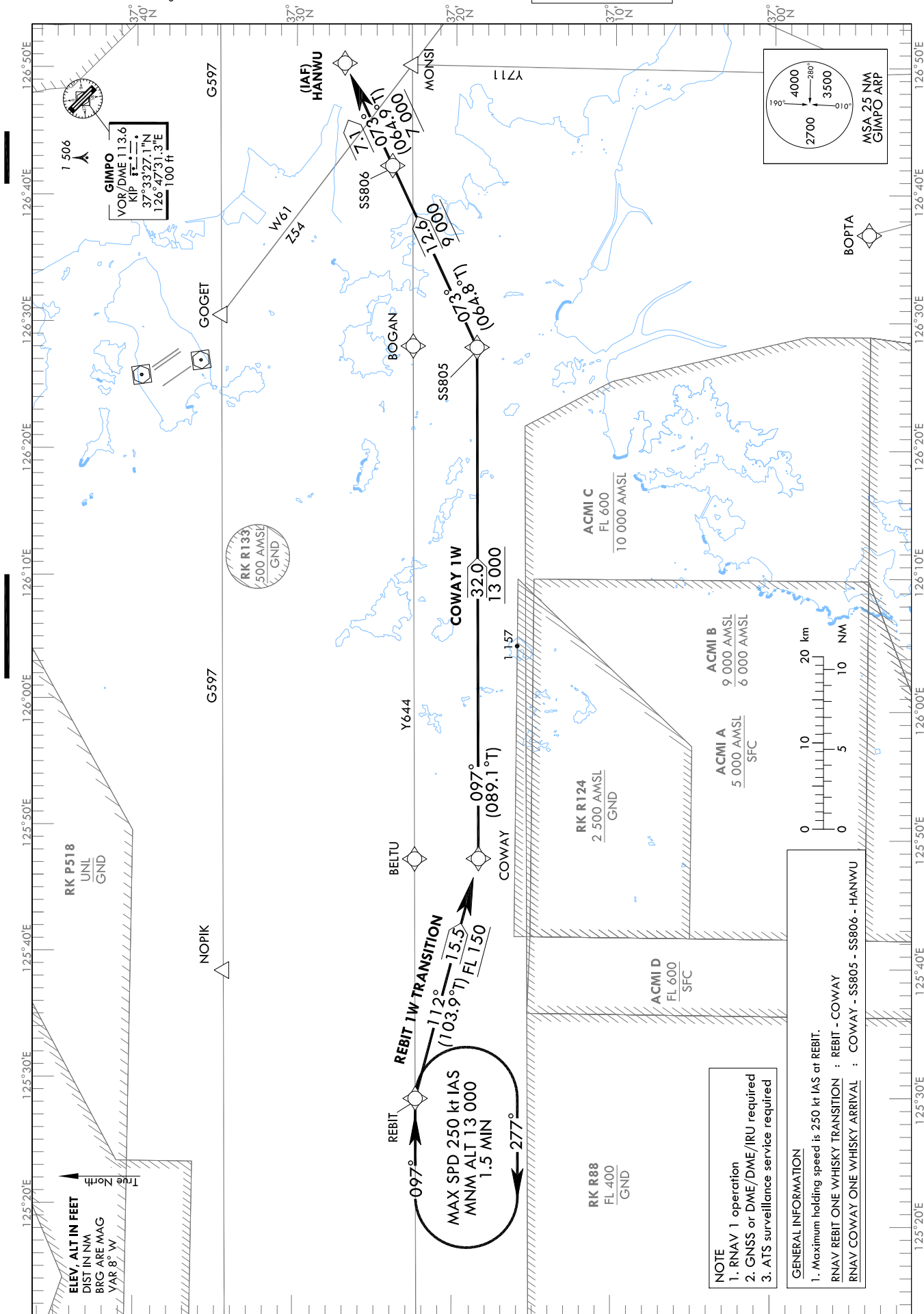
STANDARD ARRIVAL CHART
INSTRUMENT (STAR) - ICAO

Note : Arrival under ICAO Flight Procedures.

TRANSITION ALT 14 000
TRANSITION LVL FL 140

SEOUL APP 119.75
119.1
GIMPO TWR 118.1
118.05

SEOUL/Gimpo Intl(RKSS)
RWY 32L/R
RNAV COWAY 1W



Change : Information of OBST height and symbol.

SEOUL/Gimpo Intl(RKSS)

RWY 32L/R

RNAV REBIT 1W TRANSITION, RNAV COWAY 1W

AERONAUTICAL DATA TABULATION

Standard Instrument Arrival Procedure Coding Tables

RNAV REBIT 1W TRANSITION

Serial Number	Path Descriptor	Waypoint Identifier	Fly-over	Course/Track °M(°T)	Distance (NM)	Turn direction	Altitude (ft)	Speed (kt)	Coordinates	VPA/RDH	Navigation specification	Remarks
001	IF	REBIT	-	-	-	-	-	-	371203.0 N 1252912.7 E (RDL 268 SEL/D70, RDL 283 SOT/D74)	-	RNAV 1	-
002	TF	COWAY	-	112 (103.9)	15.5	-	+FL 150	-	370817.9 N 1254804.6 E (RDL 261 SEL/D56, RDL 281 SOT/D59)	-	RNAV 1	-

RNAV COWAY 1W

Serial Number	Path Descriptor	Waypoint Identifier	Fly-over	Course/Track °M(°T)	Distance (NM)	Turn direction	Altitude (ft)	Speed (kt)	Coordinates	VPA/RDH	Navigation specification	Remarks
001	IF	COWAY	-	-	-	-	+FL 150	-	370817.9 N 1254804.6 E (RDL 261 SEL/D56, RDL 281 SOT/D59)	-	RNAV 1	-
002	TF	SS805	-	097 (089.1)	32.0	-	+13 000	-	370840.3 N 1262806.7 E (RDL 242 SEL/D27, RDL 285 SOT/D27)	-	RNAV 1	-
003	TF	SS806	-	073 (064.8)	12.6	-	+9 000	-	371400.7 N 1264219.8 E (RDL 233 SEL/D15, RDL 200 KIF/D20)	-	RNAV 1	-
004	TF	HANWU	-	073 (064.9)	7.1	-	+7 000	-	371700.6 N 1265021.9 E (RDL 217 SEL/D9, RDL 180 KIP/D17)	-	RNAV 1	IAF

HOLDING PROCEDURE

Holding Identification	Path Descriptor	Waypoint Identifier	Fly-over	Course/Track °M(°T)	Time (min)	Turn direction	Altitude (ft)	Speed (kt)	Coordinates	VPA/RDH	Navigation specification	Remarks
RNAV REBIT 1W TRANSITION	-	REBIT	Y	097 (089.1)	1.5	R	+13 000	-250	371203.0 N 1252912.7 E (RDL 268 SEL/D70, RDL 283 SOT/D74)	-	RNAV 1	-

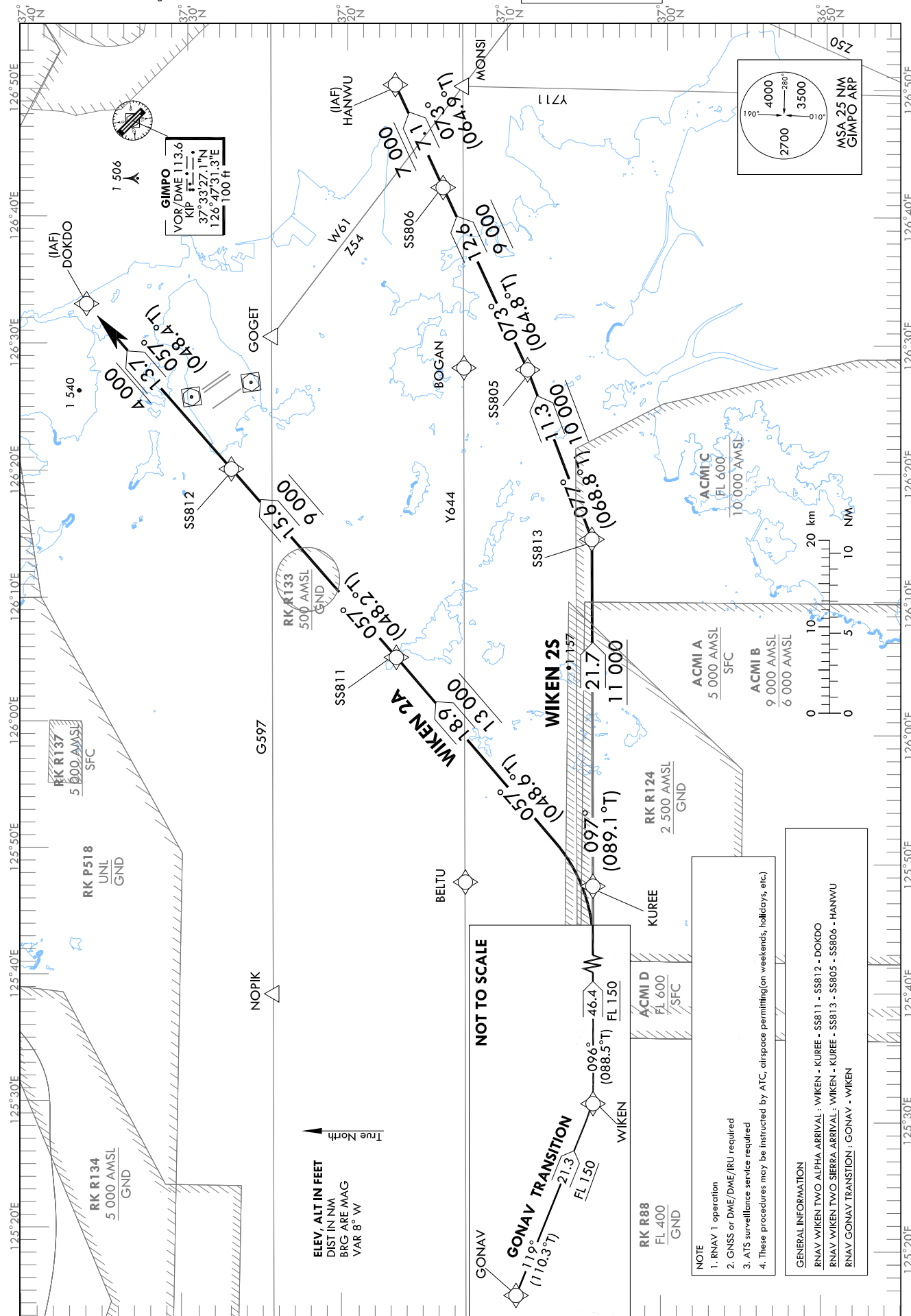
STANDARD ARRIVAL CHART
INSTRUMENT (STAR) - ICAO

Note : Arrival under ICAO Flight Procedures.

TRANSITION ALT 14 000
TRANSITION LVL FL 140

SEOUL APP 119.75
119.1
GIMPO TWR 118.1
118.05

SEOUL/Gimpo Intl(RKSS)
RWY 14L/R, RWY 32L/R
RNAV WIKEN 2A, RNAV WIKEN 2S



Change : Information of OBST height and symbol.

SEOUL/Gimpo Intl(RKSS)

RWY 14L/R, RWY 32L/R

RNAV WIKEN 2A, RNAV WIKEN 2S, RNAV GONAV TRANSITION

AERONAUTICAL DATA TABULATION

Standard Instrument Arrival Procedure Coding Tables

RNAV WIKEN 2A												
Serial Number	Path Descriptor	Waypoint Identifier	Fly-over	Course/Track °M(°T)	Distance (NM)	Turn direction	Altitude (ft)	Speed (kt)	Coordinates	VPA/RDH	Navigation specification	Remarks
001	IF	WIKEN	-	-	-	-	+FL 150	-	370321.0 N 1244951.1 E (RDL 267 SEL/D103, RDL 261 KIP/D99)	-	RNAV 1	-
002	TF	KUREE	-	096 (088.5)	46.4	-	+FL 150	-	370417.6 N 1254750.3 E (RDL 258 SEL/D58, RDL 247 KIP/D56)	-	RNAV 1	-
003	TF	SS811	-	057 (048.6)	18.9	-	+13 000	-	371644.9 N 1260533.1 E (RDL 267 SEL/D41, RDL 252 KIP/D37)	-	RNAV 1	-
004	TF	SS812	-	057 (048.2)	15.6	-	+9 000	-	372710.1 N 1262012.3 E (RDL 246 SEL/D38, RDL 262 KIP/D23)	-	RNAV 1	-
005	TF	DOKDO	-	057 (048.4)	13.7	-	+4 000	-	373617.1 N 1263307.1 E (RDL 311 SEL/D21, RDL 292 KIP/D12)	-	RNAV 1	IAF

RNAV WIKEN 2S												
Serial Number	Path Descriptor	Waypoint Identifier	Fly-over	Course/Track °M(°T)	Distance (NM)	Turn direction	Altitude (ft)	Speed (kt)	Coordinates	VPA/RDH	Navigation specification	Remarks
001	IF	WIKEN	-	-	-	-	+FL 150	-	370321.0 N 1244951.1 E (RDL 267 SEL/D103, RDL 261 KIP/D99)	-	RNAV 1	-
002	TF	KUREE	-	096 (088.5)	46.4	-	+FL 150	-	370417.6 N 1254750.3 E (RDL 258 SEL/D58, RDL 247 KIP/D56)	-	RNAV 1	-
003	TF	SS813	-	097 (089.1)	21.7	-	+11 000	-	370434.8 N 1261454.2 E (RDL 246 SEL/D38, RDL 230 KIP/D39)	-	RNAV 1	-
004	TF	SS805	-	077 (068.8)	11.3	-	+10 000	-	370840.3 N 1262806.7 E (RDL 242 SEL/D27, RDL 285 SOT/D27)	-	RNAV 1	-
005	TF	SS806	-	073 (064.8)	12.6	-	+9 000	-	371400.7 N 1264219.8 E (RDL 233 SEL/D15, RDL 200 KIP/D20)	-	RNAV 1	-
006	TF	HANWU	-	073 (064.9)	7.1	-	+7 000	-	371700.6 N 1265021.9 E (RDL 217 SEL/D9, RDL 180 KIP/D17)	-	RNAV 1	IAF

RNAV GONAV TRANSITION												
Serial Number	Path Descriptor	Waypoint Identifier	Fly-over	Course/Track °M(°T)	Distance (NM)	Turn direction	Altitude (ft)	Speed (kt)	Coordinates	VPA/RDH	Navigation specification	Remarks
001	IF	GONAV	-	-	-	-	-	-	371048.4 N 1242452.6 E (RDL 272 SEL/D121, RDL 267 KIP/D116)	-	RNAV 1	-
002	TF	WIKEN	-	119 (110.3)	21.3	-	+FL 150	-	370321.0 N 1244951.1 E (RDL 267 SEL/D103, RDL 261 KIP/D99)	-	RNAV 1	-